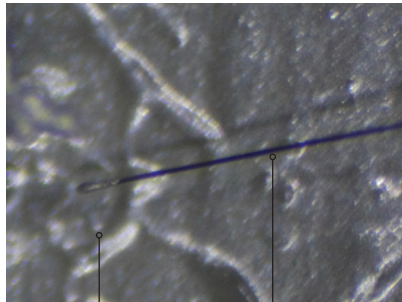
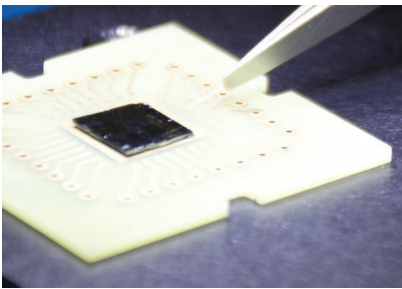


EPHEMERON LABS INC.

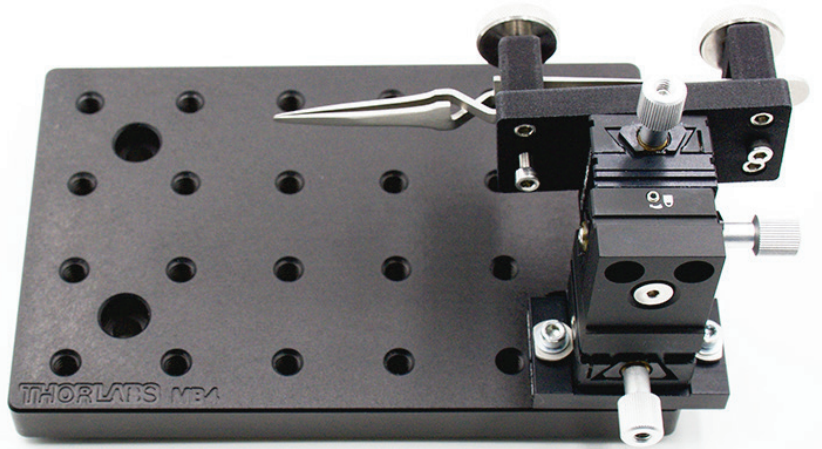
Conductive Epoxy Manual Wirebonder Kit

Kit contains everything you need to start mounting and contacting samples for insitu electrical measurements

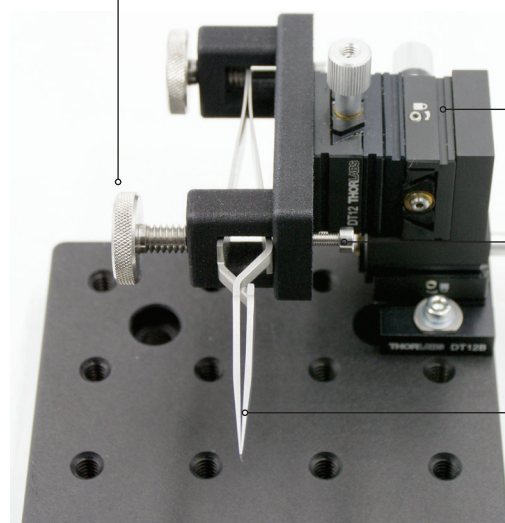


25 um bondwire

H20 Epotek
conductive epoxy



Twist knob to open clamp



3 axis micro-positioner

Adjustable clamping force

Reversible tweezers hold bond wire